

Changed Sep 25, 2024 11:53

Reviewed Sep 25, 2024 11:53

Erudus ID 3c669e430237433aae7dc8ef188f8209

Version 1.1

This specification is published by [Erudus](#) for Fairway Foodservice

Fairway Assured Salmon Portions 140-170g

Fairway Assured Salmon Portions 140-170g 10x140g

PRODUCT DESCRIPTION

Frozen portions of skinless North Atlantic salmon, individually vacuum packed 140-170gm, 10 portions in a box. Skin off trim E.

Brand	Fairway Foodservice
Label Own Label Code	97656
Product Type	Food
Product Category	Fish - Portioned
Storage Type	Frozen
Erudus ID	3c669e430237433aae7dc8ef188f8209
Specification Type	Fish and Seafood
Outer Case GTIN	5060392097656



INGREDIENTS

Ingredient Declaration

Farmed Atlantic Salmon (**FISH**) (Salmo Salar), Water, Salt.

Ingredient Statements

SAFETY: Although every care has been taken to remove all bones, some small bones may remain.

ALLERGENS

Product Contains:

Celery/Celeriac	No	Mustard	No
Cereals Containing Gluten	No	Nuts (Tree)	No
Barley	No	Almond nuts	No
Oats	No	Brazil nuts	No
Rye	No	Cashew nuts	No
Wheat (including Spelt and Khorasan)	No	Hazelnuts	No
Crustacea	No	Macadamia (Queensland) nuts	No
Eggs	No	Pecan nuts	No
Fish	Yes	Pistachio nuts	No
Lupin	No	Walnuts	No
Milk	No	Peanuts	No
Molluscs	No	Sesame Seeds	No
		Soybeans	No
		Sulphur Dioxide and Sulphites	No

Allergen Statement On Pack

For allergens please see ingredients in BOLD

SUPPLEMENTARY INGREDIENT INFORMATION

Palm Oil	No
Hydrogenated Vegetable Oil/Fat	No
GM Protein/DNA	No

ADDITIVES

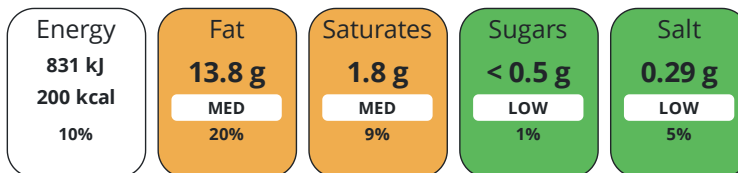
Product Contains:

Artificial Antioxidants	No	Artificial Flavourings	No
Artificial Colours	No	Artificial Preservatives	No
Artificial Flavour Enhancers	No	Artificial Sweeteners	No
Halal Diet	No	Kosher Diet	No

DIET SUITABILITY

NUTRITIONAL INFORMATION

Each 100g/ml portion contains:



of your reference intake.

Typical values per 100g/ml : Energy 200kcal / 831kj

Nutrient	per 100g	RI per 100g
Energy (kJ)	831 kJ	10%
Energy (kcal)	200 kcal	10%
Fat	13.8 g	20%
of which Saturates	1.8 g	9%
Carbohydrate	< 0.5 g	0%
of which Sugars	< 0.5 g	1%
Fibre	0 g	
Protein	19 g	38%
Salt	0.29 g	5%

SUPPLEMENTARY NUTRITIONAL INFORMATION

HANDLING & STORAGE INFORMATION

Directions For Use

For best results, cook from frozen. This product contains raw fish and must be cooked thoroughly. These instructions are guidelines only as cooking appliances vary. Ensure fish portions are piping hot and cooked throughout before serving. **OVEN BAKE:** Preheat oven to 200C / 400F/ Gas mark 6. Remove all packaging. Place portions on foil, season to taste. Wrap loosely in foil and place on baking tray in centre of oven. Bake for 15-20 minutes or until cooked through. **GRILL:** Remove all packaging. Grill on medium heat turning occasionally for 15 minutes or until cooked through.

Storage Instructions

Keep Frozen. Store below -18°C. Once defrosted do not refreeze.

Shelf Life from Time of Production 690 Days

ACCREDITATIONS/ CERTIFICATIONS/ ASSURANCE SCHEMES ORIGIN

BRCGS Certified **Sedex**

Product Country of Origin/Place of Poland

Provenance

Additional Origin Details

Farmed in Norway

Catch Zone

Fish Species Salmon (Atlantic) - Salmo salar

PRODUCT CHARACTERISTICS

Standards Testing

Microbiological Standards

Organism	Description	Frequency	Target	Maximum	Sample (g or ml)
Total Viable Count (TVC) (cfu/g or ml)	Total Plate Count	Every Batch	<500000	500000	1
Yeast (cfu/g or ml)		Every Batch	<10000	10000	1
Moulds (cfu/g or ml)		Every Batch	<10000	10000	1
Enterobacteriaceae (cfu/g or ml)		Every Batch	<10000	10000	1
Listeria Monocytogenes (cfu/g or ml)		Every Batch	=0	0	25
E. Coli (cfu/g or ml)		Every Batch	<10	10	1
Salmonella (cfu/g or ml)		Every Batch	=0	0	25

SUPPLEMENTARY INFORMATION

Skin	No
-------------	----

ORGANOLEPTICS

Appearance

meat typical for this type of fish

Aroma

natural aromatic odour with no foreign odour

Taste

aromatic, naturally without foreign taste

Texture

delicate, juicy, concise

HAZARD CONTROLS

Metal Detection	Yes
------------------------	-----

CONFIGURATION

Case Configuration		Inner Pack Configuration	
Variable Inner Components in Outer Case	No	Count per Inner Component	1
Total Quantity of Inner Components in Outer Case	10 Units		
Is the Outer Case Splittable?	No		

PRODUCT WEIGHTS

Inner Component	
Variable Weight Consumer Item	No
Inner Component Weight	140 g
Outer Case	
Outer Case Gross Weight	1.56 kg
Outer Case Net Weight	1.4 kg

PRODUCT DIMENSIONS

Inner Component	
Inner Component Depth	464 mm
Inner Component Width	350 mm
Inner Component Height	1 mm
Outer Case	
Outer Case Depth	260 mm
Outer Case Width	196 mm
Outer Case Height	83 mm

PALLET INFORMATION

Quantity of Cases Per Pallet Layer	18 Cases	Pallet Height	1.73 MTR
Quantity of Layers Per Pallet	19 Layers		
Quantity of Cases Per Pallet	336 Cases		

PACKAGING

Inner Component Packaging

Type	Materials	Weight	Recycled Plastic %	Recyclable	Returnable	Composite
Vacuum Packed	Plastic / Other	6 g	- %	No	No	Yes

Outer Case Packaging

Type	Materials	Weight	Recycled Plastic %	Recyclable	Returnable	Composite
Case	Paper/Cardboard / Cardboard	102 g	- %	Yes	No	No

OTHER INFORMATION

Commodity Code	0304810010	Identification/Health Marks	PL 32011807 UE
-----------------------	------------	------------------------------------	----------------

Manufacturer Comments

Pallet configuration - 18 layers of 18 plus 12 on top (336 total)

CONTACT INFORMATION

ADDRESS

Fairway Foodservice
 11 Cartwright Court
 Bradley Business Park
 Huddersfield
 HD2 1GN
 United Kingdom

P: (Phone) 01422 319105

The information on the [Erudus System](#) has been supplied by the manufacturers of the products and, whilst the owners of the Erudus System take steps to ensure the information is regularly updated, they give no warranty and no guarantee that the information is accurate. Product information and ingredients may change, please always read product labels carefully in addition to using the information provided by Erudus.

We do not accept liability for any inaccuracies or incorrect information contained on this site.
 Please visit <http://www.erudus.com/terms-and-conditions> for full terms and conditions.