

Changed Nov 19, 2024 00:00

Reviewed Nov 18, 2024 11:54

Erudus ID 0f5cac52b6364be4a85684421b866741

Version 4.0

Kerrymaid Whipping Cream alternative 12 x 1ltr

Ultra Heat-treated Whipping Cream Alternative 12x1kg

PRODUCT DESCRIPTION

Ultra heat-treated Whipping cream alternative ideal for pouring, cooking and whipping. The product is aseptically packed into 1L cartons

Brand	Kerry Ingredients UK Limited
Manufacturer Product Code	20304424
Effective Date	Nov 18, 2024
Product Type	Food
Product Category	Whipping Cream & Double Cream
Storage Type	Ambient
Erudus ID	0f5cac52b6364be4a85684421b866741
Specification Type	Dairy



Inner Component GTIN	5000401000727
Outer Case GTIN	05000401000741



INGREDIENTS

Ingredient Declaration

Reconstituted Skimmed MILK, Palm Kernel Oil, Water, Palm Oil, Modified Maize Starch, Flavourings (contains MILK), MILK Protein, Thickener (E415), Acidity Regulator (E331, E340), Emulsifiers (E471, E332, E435), Salt, Colour (Beta Carotene).

ALLERGENS

Product Contains:

Celery/Celery	No	Mustard	No
Cereals Containing Gluten	No	Nuts (Tree)	No
Barley	No	Almond nuts	No
Oats	No	Brazil nuts	No
Rye	No	Cashew nuts	No
Wheat (including Spelt and Khorasan)	No	Hazelnuts	No
Crustacea	No	Macadamia (Queensland) nuts	No
Eggs	No	Pecan nuts	No
Fish	No	Pistachio nuts	No
Lupin	No	Walnuts	No
Milk	Yes	Peanuts	No
Molluscs	No	Sesame Seeds	No
		Soybeans	No
		Sulphur Dioxide and Sulphites	No

SUPPLEMENTARY INGREDIENT INFORMATION

Palm Oil	Yes
Hydrogenated Vegetable Oil/Fat	No
GM Protein/DNA	No

ADDITIVES

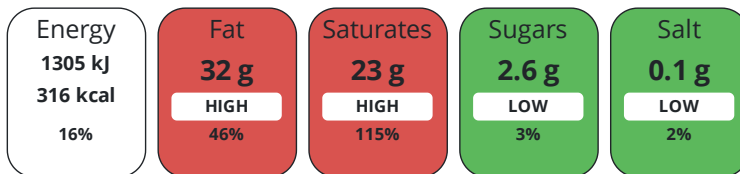
Product Contains:

Artificial Antioxidants	No	Artificial Flavourings	No
Artificial Colours	No	Artificial Preservatives	No
Artificial Flavour Enhancers	No	Artificial Sweeteners	No
Vegetarian Diet	Suitable for	Halal Diet	Certified
Kosher Diet	No		

DIET SUITABILITY

NUTRITIONAL INFORMATION

Each 100g/ml portion contains:



of your reference intake.

Typical values per 100g/ml : Energy 316kcal / 1305kj

Nutrient	per 100g	RI per 100g
Energy (kJ)	1305 kJ	16%
Energy (kcal)	316 kcal	16%
Fat	32 g	46%
of which Saturates	23 g	115%
of which Mono-unsaturates	6.2 g	
of which Polyunsaturates	1.2 g	
Carbohydrate	3.8 g	1%
of which Sugars	2.6 g	3%
of which Starch	0.7 g	
Fibre	0.5 g	
Protein	2 g	4%
Salt	0.1 g	2%

SUPPLEMENTARY NUTRITIONAL INFORMATION

HANDLING & STORAGE INFORMATION

Directions For Use

For pouring, whipping and cooking purposes. Chill for 4 hours prior to use. Make sure all whipping equipment is chilled prior to use.

Storage Instructions

Refrigerate to 2°C and 8°C before use, Store below 20°C, preferably refrigerated. Once opened refrigerate and use within 3 days

Shelf Life from Time of Production 270 Days

ACCREDITATIONS/ CERTIFICATIONS/ ASSURANCE SCHEMES ORIGIN

BRCGS Certified
Roundtable of Sustainable Palm Oil (RSPO)

Food for Life Supplier Scheme

Product Country of Origin/Place of United Kingdom

Provenance

Additional Origin Details

Northern Ireland production

PRODUCT CHARACTERISTICS

Standards Testing

CONFIGURATION	Case Configuration		Inner Pack Configuration				
	Variable Inner Components in Outer Case	No	Count per Inner Component		1		
	Total Quantity of Inner Components in Outer Case	12 Units					
	Is the Outer Case Splittable?	No					
PRODUCT WEIGHTS	Inner Component						
	Variable Weight Consumer Item	No					
	Inner Component Weight	1 kg					
	Inner Component Volume	1 litre					
	Net Drained Weight	1.01 kg					
	Outer Case						
	Outer Case Gross Weight	13.5 kg					
	Outer Case Net Weight	12.96 kg					
PRODUCT DIMENSIONS	Inner Component						
	Inner Component Depth	170 mm					
	Inner Component Width	95 mm					
	Inner Component Height	63 mm					
	Outer Case						
		Outer Case Depth	180 mm				
	Outer Case Width	199 mm					
	Outer Case Height	405 mm					
PALLET INFORMATION	Quantity of Cases Per Pallet Layer	15 Cases	Pallet Height		0.9 MTR		
	Quantity of Layers Per Pallet	5 Layers	Pallet Gross Weight		999.99 kg		
	Quantity of Cases Per Pallet	75 Cases					
PACKAGING	Inner Component Packaging						
	Type	Materials	Weight	Recycled Plastic %	Recyclable	Returnable	Composite
	Tetra Pack	Paper/Cardboard	331.2 g	- %	Yes	No	
	Outer Case Packaging						
	Type	Materials	Weight	Recycled Plastic %	Recyclable	Returnable	Composite
	Case	Paper/Cardboard	17.5 g	- %			
OTHER INFORMATION				Identification/Health Marks		UK (NI) NI 202 M EC	
	Manufacturer Comments						
Replacing Whipping Cream							

CONTACT
INFORMATION

Address

Kerry Ingredients UK Limited
Global Technology & Innovation Centre
Millennium Park
Naas
Co.Kildare
W91 W923
Ireland

P: (Phone) +00 353 45 931 000

Complaints Contact

Customer Service Europe
Customer Service Europe
customerserviceeurope@kerry.com

P: (Phone) +00 353 45 931 000

Technical Contact

Bernard James
Sales Support
bernard.james@kerry.com

Commercial Contact

Daren Baalham
Channel Controller
daren.baalham@kerry.com

The information on the [Erudus System](#) has been supplied by the manufacturers of the products and, whilst the owners of the Erudus System take steps to ensure the information is regularly updated, they give no warranty and no guarantee that the information is accurate. Product information and ingredients may change, please always read product labels carefully in addition to using the information provided by Erudus.

We do not accept liability for any inaccuracies or incorrect information contained on this site.
Please visit <http://www.erudus.com/terms-and-conditions> for full terms and conditions.