

This specification is published by [Erudus](#) for Fairway Foodservice

FAIRWAY ASSURED DISTILLED MALT VINEGAR, 5 LITRE

Distilled Malt Vinegar 4x

PRODUCT DESCRIPTION

DISTILLED MALT VINEGAR

Brand	Fairway Foodservice
Label Own Label Code	30641
Product Type	Food
Product Category	Condiments
Storage Type	Ambient
Erudus ID	ae6428bf828c45bdbf486f12d749f7c6
Specification Type	Legacy



Inner Component GTIN	5060154038231
Outer Case GTIN	5060154038224



INGREDIENTS

Ingredient Declaration

Distilled Malt Vinegar (**BARLEY**) 99.9%
Salt 0.1%

ALLERGENS

Product Contains:

Celery/Celериac	No	Mustard	No
Cereals Containing Gluten	Yes	Nuts (Tree)	No
Barley	Yes	Almond nuts	No
Oats	No	Brazil nuts	No
Rye	No	Cashew nuts	No
Wheat (including Spelt and Khorasan)	No	Hazelnuts	No
Gluten content <20ppm	Yes	Macadamia (Queensland) nuts	No
Crustacea	No	Pecan nuts	No
Eggs	No	Pistachio nuts	No
Fish	No	Walnuts	No
Lupin	No	Peanuts	No
Milk	No	Sesame Seeds	No
Molluscs	No	Soybeans	No
		Sulphur Dioxide and Sulphites	No

SUPPLEMENTARY INGREDIENT INFORMATION

Palm Oil	No
Hydrogenated Vegetable Oil/Fat	No
GM Protein/DNA	No

ADDITIVES

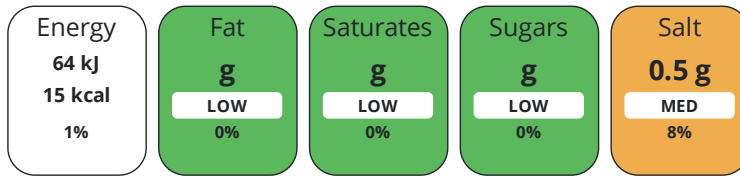
Product Contains:

Artificial Antioxidants	No	Artificial Flavourings	No
Artificial Colours	No	Artificial Preservatives	No
Artificial Flavour Enhancers	No	Artificial Sweeteners	No
Suitable for Coeliacs	Yes	Halal Diet	Suitable for
Kosher Diet	Suitable for	Vegetarian Diet	Suitable for
Vegan Diet	Suitable for		

DIET SUITABILITY

NUTRITIONAL INFORMATION

Each 100g/ml portion contains:



of your reference intake.

Typical values per 100g/ml : Energy 15kcal / 64kJ

Nutrient	per 100g/ml	RI per 100g/ml
Energy (kJ)	64 kJ	1%
Energy (kcal)	15 kcal	1%
Fat	0 g	0%
of which Saturates	0 g	0%
Carbohydrate	0 g	0%
of which Sugars	0 g	0%
of which Polyols	0 g	
of which Starch	0 g	
Fibre	0 g	
Protein	0 g	0%
Salt	0.5 g	8%
Sodium	0 mg	

SUPPLEMENTARY NUTRITIONAL INFORMATION

HANDLING & STORAGE INFORMATION

Directions For Use

n/a

Storage Instructions

KEEP COOL

Shelf Life from Time of Production

540 Days

ACCREDITATIONS/ CERTIFICATIONS/ ASSURANCE SCHEMES



ORIGIN

Product Country of Origin/Place of United Kingdom

Provenance

Additional Origin Details

UK

PRODUCT CHARACTERISTICS CONFIGURATION

Standards Testing

Case Configuration

Inner Pack Configuration

Total Quantity of Inner Components in Outer Case	4 Units
Is the Outer Case Splittable?	Yes

PRODUCT WEIGHTS

Inner Component	
Variable Weight Consumer Item	No
Net Drained Weight	5 kg
Weight/Volume	
5 LITRE	
Outer Case	
Outer Case Gross Weight	5.2 kg
Outer Case Net Weight	5 kg

PRODUCT DIMENSIONS

Inner Component	
Inner Component Depth	290 mm
Inner Component Width	190 mm
Inner Component Height	130 mm
Outer Case	
Outer Case Depth	290 mm
Outer Case Width	380 mm
Outer Case Height	0 mm

PALLET INFORMATION

Quantity of Cases Per Pallet Layer	11 Cases	Pallet Height	1.2 MTR
Quantity of Layers Per Pallet	4 Layers	Pallet Gross Weight	880 kg
Quantity of Cases Per Pallet	50 Cases		

PACKAGING

Inner Component Packaging							
Type	Materials	Weight	Recycled Plastic %	Recyclable	Returnable	Composite	
Bottle	Plastic	20 g	- %				
Outer Case Packaging							
Type	Materials	Weight	Recycled Plastic %	Recyclable	Returnable	Composite	
Case	Paper/Cardboard	180 g	- %				

OTHER INFORMATION

Manufacturer Comments
USE AS MUCH AS YOU LIKE

CONTACT INFORMATION

ADDRESS

Fairway Foodservice
11 Cartwright Court
Bradley Business Park
Huddersfield
HD2 1GN
United Kingdom

P. (Phone) 01422 319105

The information on the [Erudus System](#) has been supplied by the manufacturers of the products and, whilst the owners of the Erudus System take steps to ensure the information is regularly updated, they give no warranty and no guarantee that the information is accurate. Product information and ingredients may change, please always read product labels carefully in addition to using the information provided by Erudus.

We do not accept liability for any inaccuracies or incorrect information contained on this site.
Please visit <http://www.erudus.com/terms-and-conditions> for full terms and conditions.