

Changed Jul 26, 2024 07:50

Reviewed Jul 26, 2024 07:50

Erudus ID 10f4f72b01c848c1aec3a387aac944cf

Version 2.0



This specification is published by [Erudus](#) for Fairway Foodservice

# Fairway Assured Vegetable Oil 20L BiB

Vegetable Oil

## PRODUCT DESCRIPTION

Clear, bright oil of vegetable origin used for culinary purposes.

<b>Brand</b>	Fairway Foodservice
<b>Label Own Label Code</b>	93245
<b>Effective Date</b>	Jul 26, 2024
<b>Product Type</b>	Food
<b>Product Category</b>	Oil and Vinegars
<b>Storage Type</b>	Ambient
<b>Erudus ID</b>	10f4f72b01c848c1aec3a387aac944cf
<b>Specification Type</b>	Generic

**Outer Case GTIN** 5060392093245



## INGREDIENTS

### Ingredient Declaration

Soybean oil (Produced from genetically modified soybeans)- 99.9995%

Dimethyl polysiloxane - 0.0005%

## ALLERGENS

*Product Contains:*

<b>Celery/Celериac</b>	No	<b>Mustard</b>	No
<b>Cereals Containing Gluten</b>	No	<b>Nuts (Tree)</b>	No
<b>Barley</b>	No	<b>Almond nuts</b>	No
<b>Oats</b>	No	<b>Brazil nuts</b>	No
<b>Rye</b>	No	<b>Cashew nuts</b>	No
<b>Wheat (including Spelt and Khorasan)</b>	No	<b>Hazelnuts</b>	No
<b>Crustacea</b>	No	<b>Macadamia (Queensland) nuts</b>	No
<b>Eggs</b>	No	<b>Pecan nuts</b>	No
<b>Fish</b>	No	<b>Pistachio nuts</b>	No
<b>Lupin</b>	No	<b>Walnuts</b>	No
<b>Milk</b>	No	<b>Peanuts</b>	No
<b>Molluscs</b>	No	<b>Sesame Seeds</b>	No
		<b>Soybeans</b>	No
		<b>Sulphur Dioxide and Sulphites</b>	No

### Additional Allergen Information

The oil is fully refined therefore it doesn't contain the allergenic soya compound.

## SUPPLEMENTARY INGREDIENT INFORMATION

<b>Palm Oil</b>	No
<b>Hydrogenated Vegetable Oil/Fat</b>	No
<b>GM Protein/DNA</b>	Yes

ADDITIVES

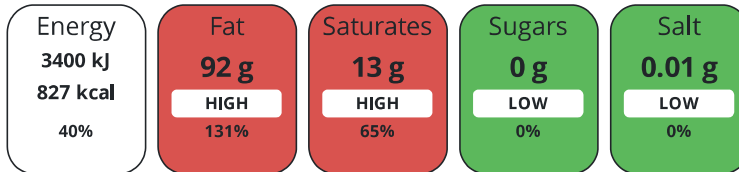
Product Contains:

<b>Artificial Antioxidants</b>	No	<b>Artificial Flavourings</b>	No
<b>Artificial Colours</b>	No	<b>Artificial Preservatives</b>	No
<b>Artificial Flavour Enhancers</b>	No	<b>Artificial Sweeteners</b>	No
<b>Vegan Diet</b>	Suitable for	<b>Vegetarian Diet</b>	Suitable for
<b>Halal Diet</b>	Suitable for	<b>Kosher Diet</b>	Suitable for

DIET SUITABILITY

NUTRITIONAL INFORMATION

Each 100g/ml portion contains:



of your reference intake.

Typical values per 100g/ml : Energy 827kcal / 3400kJ

Nutrient	per 100g	RI per 100g
<b>Energy (kJ)</b>	3400 kJ	40%
<b>Energy (kcal)</b>	827 kcal	41%
<b>Fat</b>	92 g	131%
<b>of which Saturates</b>	13 g	65%
<b>Carbohydrate</b>	0 g	0%
<b>of which Sugars</b>	0 g	0%
<b>of which Polyols</b>	0 g	
<b>of which Starch</b>	0 g	
<b>Fibre</b>	0 g	
<b>Protein</b>	0 g	0%
<b>Salt</b>	0.01 g	0%

SUPPLEMENTARY NUTRITIONAL INFORMATION

HANDLING & STORAGE INFORMATION

**Directions For Use**

Ideal for deep and shallow frying

**Storage Instructions**

Ambient temperatures, off the floor in a dry clean area. Keep away for strongly odorous material and direct sunlight

**Shelf Life from Time of Production** 547 Days

ACCREDITATIONS/ CERTIFICATIONS/ ASSURANCE SCHEMES ORIGIN

**BRCGS Certified**

**Other Accreditation**

**Product Country of Origin/Place of** United Kingdom

**Provenance**

**Additional Origin Details**

Soyabean Oil Origin: Argentina, Brazil, Canada, US

PRODUCT CHARACTERISTICS

Standards Testing

Analytical Standards

Test	Description	Frequency	Target	Range	Sample (g or ml)
Peroxide Value (PV)		Every Batch	<0	0 to 2	100
Moisture (%)		Every Batch	<0	0 to 0.1	100

CONFIGURATION

Case Configuration Inner Pack Configuration

**Total Quantity of Inner Components in Outer Case** 1 Units

**Is the Outer Case Splittable?** No

PRODUCT WEIGHTS

Inner Component

**Variable Weight Consumer Item** Yes

Outer Case

**Outer Case Gross Weight** 19.11 kg

**Outer Case Net Weight** 18.4 kg

PRODUCT DIMENSIONS

Inner Component

**Inner Component Depth** 291 mm

**Inner Component Width** 384 mm

**Inner Component Height** 241 mm

Outer Case

**Outer Case Depth** 245 mm

**Outer Case Width** 232 mm

**Outer Case Height** 389 mm

PALLET INFORMATION

**Quantity of Cases Per Pallet Layer** 16 Cases **Pallet Height** 1.2 MTR

**Quantity of Layers Per Pallet** 3 Layers

**Quantity of Cases Per Pallet** 48 Cases

PACKAGING

Inner Component Packaging

Type	Materials	Weight	Recycled Plastic %	Recyclable	Returnable	Composite
Bottle	Plastic	350 g	- %			

Outer Case Packaging

Type	Materials	Weight	Recycled Plastic %	Recyclable	Returnable	Composite
Case	Paper/Cardboard	361 g	- %			

OTHER INFORMATION CONTACT INFORMATION

ADDRESS

Fairway Foodservice  
 11 Cartwright Court  
 Bradley Business Park  
 Huddersfield  
 HD2 1GN  
 United Kingdom

P: (Phone) 01422 319105

The information on the [Erudus System](#) has been supplied by the manufacturers of the products and, whilst the owners of the Erudus System take steps to ensure the information is regularly updated, they give no warranty and no guarantee that the information is accurate. Product information and ingredients may change, please always read product labels carefully in addition to using the information provided by Erudus.

We do not accept liability for any inaccuracies or incorrect information contained on this site.  
Please visit <http://www.erudus.com/terms-and-conditions> for full terms and conditions.