

Changed Aug 27, 2024 08:42

Reviewed Aug 27, 2024 08:42

Erudus ID 0c011db8046a4a4f84d3d9f52db8a7b2

Version 3.0

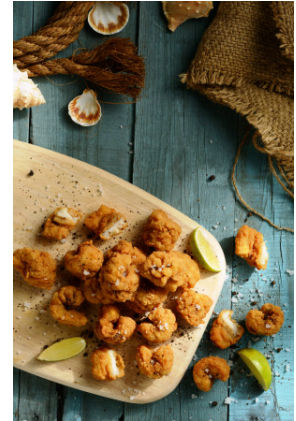
# Frozen Raw SALT & PEPPER SQUID 6 x 1kg

Salt & Pepper Squid 6x1kg

## PRODUCT DESCRIPTION

Frozen raw natural tender pieces of squid which are scored to give a unique texture and appearance, coated in an authentic salt pepper coating. Product is par fry with canola oil.

Brand	Pacific West Foods
Manufacturer Product Code	SPS50PW6
Product Type	Food
Product Category	Other Fish & Seafood
Storage Type	Frozen
Erudus ID	0c011db8046a4a4f84d3d9f52db8a7b2
Specification Type	Fish and Seafood



Inner Component GTIN	9555018507726
Outer Case GTIN	19555018507723



## INGREDIENTS

### Ingredient Declaration

Squid (**MOLLUSCS**) (70%), Coating [ **WHEAT** Flour, Water, Canola Oil, Thickener (E1412), Sugar, Salt (1.4%), Pepper (1%), Raising Agents (E450, E500), Yeast Extract, Spices, Colour (E160c)].

## ALLERGENS

Product Contains:

<b>Celery/Celeriac</b>	No	<b>Mustard</b>	No
<b>Cereals Containing Gluten</b>	Yes	<b>Nuts (Tree)</b>	No
<b>Barley</b>	No	<b>Almond nuts</b>	No
<b>Oats</b>	No	<b>Brazil nuts</b>	No
<b>Rye</b>	No	<b>Cashew nuts</b>	No
<b>Wheat (including Spelt and Khorasan)</b>	Yes	<b>Hazelnuts</b>	No
<b>Crustacea</b>	May Contain	<b>Macadamia (Queensland) nuts</b>	No
<b>Eggs</b>	No	<b>Pecan nuts</b>	No
<b>Fish</b>	May Contain	<b>Pistachio nuts</b>	No
<b>Lupin</b>	No	<b>Walnuts</b>	No
<b>Milk</b>	May Contain	<b>Peanuts</b>	No
<b>Molluscs</b>	Yes	<b>Sesame Seeds</b>	No
		<b>Soybeans</b>	May Contain
		<b>Sulphur Dioxide and Sulphites</b>	No

Risk Source:

### Additional Allergen Information

Allergy Advice: For allergens, including cereals containing gluten, see ingredients in bold May also contain fish, crustaceans, milk, soya

SUPPLEMENTARY  
INGREDIENT  
INFORMATION

<b>Palm Oil</b>	No
<b>Hydrogenated Vegetable Oil/Fat</b>	No
<b>GM Protein/DNA</b>	No

ADDITIVES

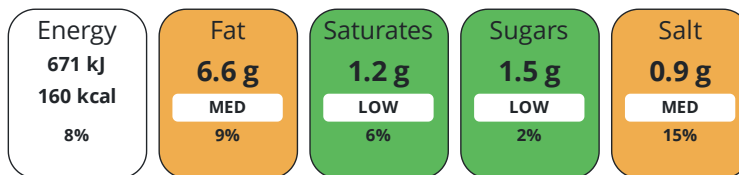
Product Contains:

<b>Artificial Antioxidants</b>	No	<b>Artificial Flavourings</b>	No
<b>Artificial Colours</b>	No	<b>Artificial Preservatives</b>	No
<b>Artificial Flavour Enhancers</b>	No	<b>Artificial Sweeteners</b>	No
<b>Halal Diet</b>	No	<b>Kosher Diet</b>	No

DIET  
SUITABILITY

NUTRITIONAL  
INFORMATION

Each 100g/ml portion contains:



of your reference intake.

Typical values per 100g/ml : Energy 160kcal / 671kJ

Nutrient	per 100g	RI per 100g
<b>Energy (kJ)</b>	671 kJ	8%
<b>Energy (kcal)</b>	160 kcal	8%
<b>Fat</b>	6.6 g	9%
<b>of which Saturates</b>	1.2 g	6%
<b>Carbohydrate</b>	16 g	6%
<b>of which Sugars</b>	1.5 g	2%
<b>Fibre</b>	0.6 g	
<b>Protein</b>	9.3 g	19%
<b>Salt</b>	0.9 g	15%

SUPPLEMENTARY  
NUTRITIONAL  
INFORMATION

HANDLING &  
STORAGE  
INFORMATION

**Directions For Use**

Deep Fry: Preheat oil to 180°C. Deep fry frozen squid for 3-4 minutes or until golden brown. Conventional Oven: Preheat oven to 230°C (fan forced) (Gas Mark 8). Place frozen squid on a pre-heated baking rack and bake for 16 – 18 minutes or until golden brown, turning over halfway through cooking.

**Storage Instructions**

Keep frozen. Store at or below minus 18°C. Do not refreeze.

**Shelf Life from Time of Production** 912 Days

ACCREDITATIONS/  
CERTIFICATIONS/  
ASSURANCE  
SCHEMES  
ORIGIN

**BRCGS Certified** **Sedex**

**Product Country of Origin/Place of** Malaysia

**Provenance**

**Additional Origin Details**

Dosidicus gigas - Pacific Ocean (FAO87)

**Catch Zone** 87 - Pacific, Southeast

PRODUCT CHARACTERISTICS

Standards Testing

**Do you undertake trend analysis of microbiological results?** No

**Is shelf life testing undertaken?** No

Microbiological Standards

Organism	Description	Frequency	Target	Maximum	Sample (g or ml)
Total Viable Count (TVC) (cfu/g or ml)	Total Plate Count	Every Batch	<1000000	1000000	1
E. Coli (cfu/g or ml)		Every Batch	<10	10	1
Coagulase-positive Staphylococci (cfu/g or ml)		Every Batch	<100	100	1
Salmonella (cfu/g or ml)		Every Batch	=0	0	25

CONFIGURATION

Case Configuration

Inner Pack Configuration

**Total Quantity of Inner Components in Outer Case** 6 Units

**Is the Outer Case Splittable?** Yes

PRODUCT WEIGHTS

Inner Component

**Variable Weight Consumer Item** No

**Inner Component Weight** 1 kg

Outer Case

**Outer Case Gross Weight** 6.81 kg

**Outer Case Net Weight** 6 kg

PRODUCT DIMENSIONS

Inner Component

**Inner Component Depth** 232 mm

**Inner Component Width** 192 mm

**Inner Component Height** 64 mm

Outer Case

**Outer Case Depth** 395 mm

**Outer Case Width** 241 mm

**Outer Case Height** 203 mm

PALLET INFORMATION

**Quantity of Cases Per Pallet Layer** 10 Cases

**Pallet Type** UK Standard Pallet

**Quantity of Layers Per Pallet** 7 Layers

**Pallet Height** 1.63 MTR

**Quantity of Cases Per Pallet** 70 Cases

**Pallet Gross Weight** 502 kg

PACKAGING

Inner Component Packaging

Type	Materials	Weight	Recycled Plastic %	Recyclable	Returnable	Composite
Carton	Paper/Cardboard / Carton Board	63.5 g	- %	Yes		

Outer Case Packaging

Type	Materials	Weight	Recycled Plastic %	Recyclable	Returnable	Composite
Case	Paper/Cardboard / Corrugated	365 g	- %	Yes		

OTHER INFORMATION

**Intrastat/Taric Code** 1605540090

**Identification/Health Marks**

Est No 50

CONTACT  
INFORMATION

Address

Pacific West Foods  
3 Willowside Park  
Canal Road  
Trowbridge  
Wiltshire  
BA 14 8RH  
England

P: (Phone) 01373 824242

The information on the [Erudus System](#) has been supplied by the manufacturers of the products and, whilst the owners of the Erudus System take steps to ensure the information is regularly updated, they give no warranty and no guarantee that the information is accurate. Product information and ingredients may change, please always read product labels carefully in addition to using the information provided by Erudus.

We do not accept liability for any inaccuracies or incorrect information contained on this site.  
Please visit <http://www.erudus.com/terms-and-conditions> for full terms and conditions.