

# Frozen Raw TEMPURA TORPEDO PRAWNS Japanese Style

Tempura Torpedo Prawns Japanese Style 10x

## PRODUCT DESCRIPTION

Premium large prawns in unique bubbly crisp Japanese style tempura coating, product is par fry with palm oil.

<b>Brand</b>	Pacific West Foods
<b>Manufacturer Product Code</b>	TTP21PW
<b>Product Type</b>	Food
<b>Product Category</b>	Seafood - Crustaceans
<b>Storage Type</b>	Frozen
<b>Erudus ID</b>	e6341348e4484b59968827bca14a5a95
<b>Specification Type</b>	Legacy



<b>Inner Component GTIN</b>	9555018504022
<b>Outer Case GTIN</b>	19555018504029



## INGREDIENTS

### Ingredient Declaration

Prawn [**CRUSTACEANS**, Stabilisers (E450, E451)] (50%), Coating (50%) [**WHEAT** Flour, Water, Palm Oil, Thickener (E1404), Raising Agents (E450, E500), **EGG** White Powder (less than 2%), Salt, Sugar, Onion, Paprika, **CELERY**, **SOY** Flour, Flavour Enhancer (E621), Squid Extract Powder (**MOLLUSCS**), Garlic, Pepper, **MILK** Powder (less than 0.2%)].

## ALLERGENS

Product Contains:

<b>Celery/Celery</b>	Yes	<b>Mustard</b>	May Contain
<b>Cereals Containing Gluten</b>	Yes	<b>Nuts (Tree)</b>	No
<b>Barley</b>	No	<b>Almond nuts</b>	No
<b>Oats</b>	No	<b>Brazil nuts</b>	No
<b>Rye</b>	No	<b>Cashew nuts</b>	No
<b>Wheat (including Spelt and Khorasan)</b>	Yes	<b>Hazelnuts</b>	No
<b>Gluten content &lt;20ppm</b>	No	<b>Macadamia (Queensland) nuts</b>	No
<b>Crustacea</b>	Yes	<b>Pecan nuts</b>	No
<b>Eggs</b>	Yes	<b>Pistachio nuts</b>	No
<b>Fish</b>	May Contain	<b>Walnuts</b>	No
<b>Lupin</b>	No	<b>Peanuts</b>	No
<b>Milk</b>	Yes	<b>Sesame Seeds</b>	No
<b>Molluscs</b>	Yes	<b>Soybeans</b>	Yes
		<b>Sulphur Dioxide and Sulphites</b>	May Contain

Risk Source:

### Additional Allergen Information

Allergy Advice: For allergens, including cereals containing gluten, see ingredients in bold May also contain fish, mustard and Sulphites

#### SUPPLEMENTARY INGREDIENT INFORMATION

<b>Palm Oil</b>	Yes
<b>Hydrogenated Vegetable Oil/Fat</b>	No
<b>GM Protein/DNA</b>	No

#### ADDITIVES

Product Contains:

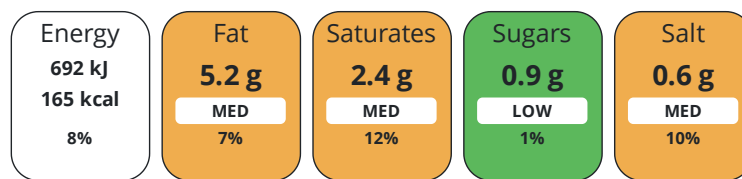
<b>Artificial Antioxidants</b>	No	<b>Artificial Flavourings</b>	No
<b>Artificial Colours</b>	No	<b>Artificial Preservatives</b>	No
<b>Artificial Flavour Enhancers</b>	Yes	<b>Artificial Sweeteners</b>	No

#### DIET SUITABILITY

<b>Suitable for Coeliacs</b>	No	<b>Halal Diet</b>	Suitable for
<b>Kosher Diet</b>	No	<b>Vegetarian Diet</b>	No
<b>Vegan Diet</b>	No		

#### NUTRITIONAL INFORMATION

Each 100g/ml portion contains:



of your reference intake.

Typical values per 100g/ml : Energy 165kcal / 692kJ

Nutrient	per 100g/ml	RI per 100g/ml
<b>Energy (kJ)</b>	692 kJ	8%
<b>Energy (kcal)</b>	165 kcal	8%
<b>Fat</b>	5.2 g	7%
<b>of which Saturates</b>	2.4 g	12%
<b>Carbohydrate</b>	17.2 g	7%
<b>of which Sugars</b>	0.9 g	1%
<b>Protein</b>	10.8 g	22%
<b>Salt</b>	0.6 g	10%

#### SUPPLEMENTARY NUTRITIONAL INFORMATION

#### HANDLING & STORAGE INFORMATION

##### Directions For Use

Deep Fry: Preheat oil to 180°C. Deep fry frozen prawns for 2-3 minutes or until golden brown. Conventional Oven: Preheat oven to 220°C. Place frozen prawns on a pre-heated baking rack and bake for 16-18 minutes or until golden brown, turning over halfway through cooking. Allow a minute to cool before serving.

##### Storage Instructions

Keep frozen. Store at or below minus 18°C. Do not refreeze once thawed.

<b>Shelf Life from Time of Production</b>	900 Days
---	----------

#### ACCREDITATIONS/ CERTIFICATIONS/ ASSURANCE SCHEMES

<b>BRCGS Certified</b>
------------------------

##### Other Accreditation

ORIGIN	<b>Product Country of Origin/Place of Provenance</b>	Other					
PRODUCT CHARACTERISTICS CONFIGURATION	<b>Additional Origin Details</b>	Myanmar					
	Standards Testing						
	Case Configuration		Inner Pack Configuration				
	<b>Total Quantity of Inner Components in Outer Case</b>	10 Units					
PRODUCT WEIGHTS	<b>Is the Outer Case Splittable?</b>	Yes					
	Inner Component						
	<b>Variable Weight Consumer Item</b>	No					
	<b>Net Drained Weight</b>	0 kg					
	<b>Weight/Volume</b>	500g net					
	Outer Case						
	<b>Outer Case Gross Weight</b>	6.19 kg					
	<b>Outer Case Net Weight</b>	5 kg					
	PRODUCT DIMENSIONS	Inner Component					
		<b>Inner Component Depth</b>	234 mm				
<b>Inner Component Width</b>		134 mm					
<b>Inner Component Height</b>		60 mm					
Outer Case							
<b>Outer Case Depth</b>		282 mm					
<b>Outer Case Width</b>		246 mm					
<b>Outer Case Height</b>		318 mm					
PALLET INFORMATION		<b>Quantity of Cases Per Pallet Layer</b>	17 Cases	<b>Pallet Height</b>	1.59 MTR		
		<b>Quantity of Layers Per Pallet</b>	5 Layers				
	<b>Quantity of Cases Per Pallet</b>	85 Cases					
PACKAGING	Inner Component Packaging						
	<b>Type</b>	<b>Materials</b>	<b>Weight</b>	<b>Recycled Plastic %</b>	<b>Recyclable</b>	<b>Returnable</b>	<b>Composite</b>
	Box	Other	70 g	- %			
	Outer Case Packaging						
	<b>Type</b>	<b>Materials</b>	<b>Weight</b>	<b>Recycled Plastic %</b>	<b>Recyclable</b>	<b>Returnable</b>	<b>Composite</b>
	Case	Paper/Cardboard	246 g	- %			
	OTHER INFORMATION	<b>Manufacturer Comments</b>					
		Pallet height exculding pallet . Product is in opp laminated inner with a opp laminated tray					

CONTACT  
INFORMATION

Address

Pacific West Foods  
3 Willowside Park  
Canal Road  
Trowbridge  
Wiltshire  
BA 14 8RH  
England

P: (Phone) 01373 824242

The information on the [Erudus System](#) has been supplied by the manufacturers of the products and, whilst the owners of the Erudus System take steps to ensure the information is regularly updated, they give no warranty and no guarantee that the information is accurate. Product information and ingredients may change, please always read product labels carefully in addition to using the information provided by Erudus.

We do not accept liability for any inaccuracies or incorrect information contained on this site.  
Please visit <http://www.erudus.com/terms-and-conditions> for full terms and conditions.