

This specification is published by [Erudus](#) for Fairway Foodservice

# FAIRWAY ASSURED MASHED POTATOES 4 x 2.5kg

Mashed Potato 4x2.5kg

## PRODUCT DESCRIPTION

Seasoned, frozen mashed potato

<b>Brand</b>	Fairway Foodservice
<b>Label Own Label Code</b>	97120
<b>Product Type</b>	Food
<b>Product Category</b>	Potato Products
<b>Storage Type</b>	Frozen
<b>Erudus ID</b>	001c0877a18b4814a9f0670bbc872da3
<b>Specification Type</b>	Legacy



<b>Inner Component GTIN</b>	5060392097113
<b>Outer Case GTIN</b>	5060392097120



## INGREDIENTS

### Ingredient Declaration

Potatoes, whole **MILK**, concentrated butter (**MILK**), salt, emulsifier (mono-and diglycerides of fatty acids), white pepper.

## ALLERGENS

Product Contains:

<b>Celery/Celeriac</b>	No	<b>Mustard</b>	No
<b>Cereals Containing Gluten</b>	May Contain	<b>Nuts (Tree)</b>	No
<b>Barley</b>	No	<b>Almond nuts</b>	No
<b>Oats</b>	No	<b>Brazil nuts</b>	No
<b>Rye</b>	No	<b>Cashew nuts</b>	No
<b>Wheat (including Spelt and Khorasan)</b>	May Contain	<b>Hazelnuts</b>	No
<b>Crustacea</b>	No	<b>Macadamia (Queensland) nuts</b>	No
<b>Eggs</b>	May Contain	<b>Pecan nuts</b>	No
<b>Fish</b>	No	<b>Pistachio nuts</b>	No
<b>Lupin</b>	No	<b>Walnuts</b>	No
<b>Milk</b>	Yes	<b>Peanuts</b>	No
<b>Molluscs</b>	No	<b>Sesame Seeds</b>	No
		<b>Soybeans</b>	No
		<b>Sulphur Dioxide and Sulphites</b>	May Contain

Risk Source:

## SUPPLEMENTARY INGREDIENT INFORMATION

<b>Palm Oil</b>	No
<b>Hydrogenated Vegetable Oil/Fat</b>	No
<b>GM Protein/DNA</b>	No

ADDITIVES

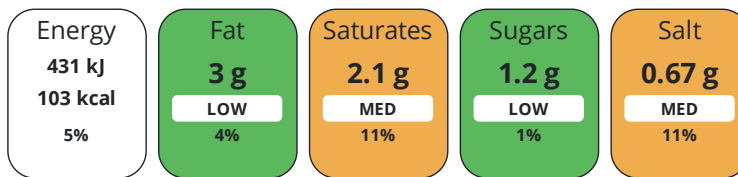
Product Contains:

<b>Artificial Antioxidants</b>	No	<b>Artificial Flavourings</b>	No
<b>Artificial Colours</b>	No	<b>Artificial Preservatives</b>	No
<b>Artificial Flavour Enhancers</b>	No	<b>Artificial Sweeteners</b>	No
<b>Suitable for Coeliacs</b>	No	<b>Halal Diet</b>	No
<b>Kosher Diet</b>	No	<b>Vegetarian Diet</b>	Suitable for
<b>Vegan Diet</b>	No		

DIET SUITABILITY

NUTRITIONAL INFORMATION

Each 100g/ml portion contains:



of your reference intake.

Typical values per 100g/ml : Energy 103kcal / 431kj

Nutrient	per 100g/ml	RI per 100g/ml	per 150g/ml serving	RI per 150g/ml serving
<b>Energy (kJ)</b>	431 kJ	5%	646.5 kJ	8%
<b>Energy (kcal)</b>	103 kcal	5%	154.5 kcal	8%
<b>Fat</b>	3 g	4%	4.5 g	6%
<b>of which Saturates</b>	2.1 g	11%	3.2 g	16%
<b>Carbohydrate</b>	16 g	6%	24 g	9%
<b>of which Sugars</b>	1.2 g	1%	1.8 g	2%
<b>Fibre</b>	1.7 g		2.6 g	
<b>Protein</b>	2.2 g	4%	3.3 g	7%
<b>Salt</b>	0.67 g	11%	1 g	17%
<b>Serving Size</b>	150 g			

SUPPLEMENTARY NUTRITIONAL INFORMATION

HANDLING & STORAGE INFORMATION

**Directions For Use**

In the microwave : Place 125g of frozen mashed potato in a microwave for 3 min. (800 W). Stirring after 2 min. In the oven : Pre-heat oven to 200°C. Place frozen mashed potatoes (750g or 1kg) into an oven proof dish and cook in the center of the oven. Stir the mash potato after about 10 min and place the product again during 15-20 minutes in the oven. In the frying pan : Cook on a low heat, stirring occasionally, until the mashed potato is hot.

**Storage Instructions**

Keep frozen at -18 °C or below. Do not refreeze once defrosted.

**Shelf Life from Time of Production** 730 Days

ACCREDITATIONS/ CERTIFICATIONS/ ASSURANCE SCHEMES



ORIGIN

**Product Country of Origin/Place of Provenance** Belgium

PRODUCT CHARACTERISTICS

Standards Testing

**Do you undertake trend analysis of microbiological results?** Yes

**Is shelf life testing undertaken?** Yes

Microbiological Standards

Organism	Description	Frequency	Target	Maximum	Sample (g or ml)
Bacillus Cereus (cfu/g or ml)		Quarterly	<100	1000	-
E. Coli (cfu/g or ml)		Quarterly	<100	1000	-
Listeria Monocytogenes (cfu/g or ml)		Quarterly	<0	100	-
Staphylococcus Aureus (cfu/g or ml)		Quarterly	<100	1000	-
Total Viable Count (TVC) (cfu/g or ml)		Quarterly	<100000	500000	-
Salmonella (cfu/g or ml)		Quarterly	<0	0	-

Analytical Standards

Test	Description	Frequency	Target	Range	Sample (g or ml)
Moisture (%)		Every Batch	<81	0 to 81	-

Physical Standards

Test	Description	Frequency	Target	Range	Sample (g or ml)
Dimensions Length (mm)		Every Batch	=40	27 to 55	-

CONFIGURATION

Case Configuration

Inner Pack Configuration

**Total Quantity of Inner Components in Outer Case** 4 Units

**Is the Outer Case Splittable?** Yes

PRODUCT WEIGHTS

Inner Component

**Variable Weight Consumer Item** No

**Inner Component Weight** 2.5 kg

**Weight/Volume**

2.5 kg

Outer Case

**Outer Case Gross Weight** 10.34 kg

**Outer Case Net Weight** 10 kg

PRODUCT DIMENSIONS

Inner Component

**Inner Component Depth** 425 mm

**Inner Component Width** 300 mm

**Inner Component Height** 30 mm

Outer Case

**Outer Case Depth** 386 mm

**Outer Case Width** 251 mm

**Outer Case Height** 216 mm

PALLET INFORMATION

**Quantity of Cases Per Pallet Layer** 12 Cases

**Pallet Height** 1.6 MTR

**Quantity of Layers Per Pallet** 6 Layers

**Pallet Gross Weight** 771.98 kg

**Quantity of Cases Per Pallet** 72 Cases

PACKAGING

Inner Component Packaging

Type	Materials	Weight	Recycled Plastic %	Recyclable	Returnable	Composite
Foil	Plastic	14.3 g	- %			

Outer Case Packaging

Type	Materials	Weight	Recycled Plastic %	Recyclable	Returnable	Composite
Case	Paper/Cardboard	315 g	- %			

Transport Packaging

Type	Materials	Weight	Recycled Plastic %	Recyclable	Returnable	Composite
Other	Plastic	200 g	- %			

OTHER INFORMATION CONTACT INFORMATION

ADDRESS

Fairway Foodservice  
 11 Cartwright Court  
 Bradley Business Park  
 Huddersfield  
 HD2 1GN  
 United Kingdom

P. (Phone) 01422 319105

The information on the [Erudus System](#) has been supplied by the manufacturers of the products and, whilst the owners of the Erudus System take steps to ensure the information is regularly updated, they give no warranty and no guarantee that the information is accurate. Product information and ingredients may change, please always read product labels carefully in addition to using the information provided by Erudus.

We do not accept liability for any inaccuracies or incorrect information contained on this site.  
 Please visit <http://www.erudus.com/terms-and-conditions> for full terms and conditions.