

Changed Feb 17, 2024 00:00

Reviewed Feb 16, 2024 12:51

Erudus ID e2a8da819dbd461e91534c8d4cd4dd0a

Version 2.0

# CUISINE Aerosol Cream UHT 6x500g

Cuisine Aerosol Cream Uht 6x500g 6x500g

## PRODUCT DESCRIPTION

White, highly aerated whipped cream, giving well defined peaks immediately after expulsion, with no weeping

Brand	Staple Food Group
Manufacturer Product Code	P0000094
Effective Date	Feb 16, 2024
Product Type	Food
Product Category	Whipping Cream & Double Cream
Storage Type	Chilled
Erudus ID	e2a8da819dbd461e91534c8d4cd4dd0a
Specification Type	Dairy



Inner Component GTIN	5020938282175
Outer Case GTIN	05020938283172



## INGREDIENTS

### Ingredient Declaration

CREAM (94.5%), Sugar (5%), Emulsifier: Mono and Diglycerides of Fatty Acids (E471). Stabiliser: Carrageenan (E407). Natural Vanilla Flavour, Propellant: Nitrous Oxide (E492).

## ALLERGENS

Product Contains:

<b>Celery/Celery</b>	No	<b>Mustard</b>	No
<b>Cereals Containing Gluten</b>	No	<b>Nuts (Tree)</b>	No
<b>Barley</b>	No	<b>Almond nuts</b>	No
<b>Oats</b>	No	<b>Brazil nuts</b>	No
<b>Rye</b>	No	<b>Cashew nuts</b>	No
<b>Wheat (including Spelt and Khorasan)</b>	No	<b>Hazelnuts</b>	No
<b>Crustacea</b>	No	<b>Macadamia (Queensland) nuts</b>	No
<b>Eggs</b>	No	<b>Pecan nuts</b>	No
<b>Fish</b>	No	<b>Pistachio nuts</b>	No
<b>Lupin</b>	No	<b>Walnuts</b>	No
<b>Milk</b>	Yes	<b>Peanuts</b>	No
<b>Molluscs</b>	No	<b>Sesame Seeds</b>	No
		<b>Soybeans</b>	No
		<b>Sulphur Dioxide and Sulphites</b>	No

## SUPPLEMENTARY INGREDIENT INFORMATION

<b>Palm Oil</b>	No	<b>Alcoholic Strength %Vol (ABV)</b>	0 % Vol
<b>Hydrogenated Vegetable Oil/Fat</b>	No		
<b>GM Protein/DNA</b>	No		

ADDITIVES

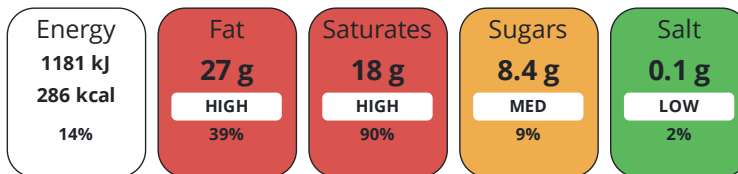
Product Contains:

<b>Artificial Antioxidants</b>	No	<b>Artificial Flavourings</b>	No
<b>Artificial Colours</b>	No	<b>Artificial Preservatives</b>	No
<b>Artificial Flavour Enhancers</b>	No	<b>Artificial Sweeteners</b>	No
<b>Vegetarian Diet</b>	Suitable for	<b>Halal Diet</b>	No
<b>Kosher Diet</b>	No		

DIET SUITABILITY

NUTRITIONAL INFORMATION

Each 100g/ml portion contains:



of your reference intake.

Typical values per 100g/ml : Energy 286kcal / 1181kJ

Nutrient	per 100g	RI per 100g	per 12.5g serving	RI per 12.5g serving
<b>Energy (kJ)</b>	1181 kJ	14%	147.6 kJ	2%
<b>Energy (kcal)</b>	286 kcal	14%	35.8 kcal	2%
<b>Fat</b>	27 g	39%	3.4 g	5%
<b>of which Saturates</b>	18 g	90%	2.3 g	12%
<b>Carbohydrate</b>	8.4 g	3%	1.1 g	0%
<b>of which Sugars</b>	8.4 g	9%	1.1 g	1%
<b>Fibre</b>	< 0.5 g		0.1 g	
<b>Protein</b>	2.3 g	5%	0.3 g	1%
<b>Salt</b>	0.1 g	2%	-	
<b>Sodium</b>	40 mg		5 mg	
<b>Serving Size</b>	12.5 g			

VITAMINS AND MINERALS

Nutrient	per 100g	RI per 100g	per 12.5g serving	RI per 12.5g serving
<b>Vitamin A</b>	0.03 µg	0%	-	
<b>Vitamin C</b>	0 mg	0%	-	
<b>Folate/Folic Acid</b>	0.01 µg	0%	-	
<b>Calcium</b>	614 mg	77%	76.8 mg	10%
<b>Iron</b>	0.7 mg	5%	0.1 mg	1%
<b>Zinc</b>	3.3 mg	33%	0.4 mg	4%

SUPPLEMENTARY NUTRITIONAL INFORMATION

<b>Cholesterol per 100 g/ml (UK/FR)</b>	91.7 g
<b>Non Milk Extrinsic Sugars per 100 g/ml</b>	0 g

HANDLING & STORAGE INFORMATION

**Directions For Use**

Shake can firmly two or three times before use. Hold can upside down and press nozzle to release cream. Rinse inside nozzle after use with warm water.

**Storage Instructions**

Store in a cool place and keep refrigerated after opening.

**Shelf Life from Time of Production** 300 Days

**Shelf Life From Opening** 200 Days

ACCREDITATIONS/ CERTIFICATIONS/ ASSURANCE SCHEMES ORIGIN

**BRCGS Certified**

**Other Accreditation**

**Product Country of Origin/Place of** Italy

**Provenance**

**Additional Origin Details**

Produced at the Co-Operlat Soc. site in Italy.

PRODUCT CHARACTERISTICS CONFIGURATION

Standards Testing

Case Configuration

Inner Pack Configuration

**Total Quantity of Inner Components in** 6 Units

**Outer Case**

**Is the Outer Case Splittable?** Yes

PRODUCT WEIGHTS

Inner Component

**Variable Weight Consumer Item** No

**Inner Component Weight** 500 g

Outer Case

**Outer Case Gross Weight** 3.71 kg

**Outer Case Net Weight** 3 kg

PRODUCT DIMENSIONS

Inner Component

**Inner Component Depth** 303 mm

**Inner Component Width** 66 mm

**Inner Component Height** 66 mm

Outer Case

**Outer Case Depth** 310 mm

**Outer Case Width** 140 mm

**Outer Case Height** 210 mm

PALLET INFORMATION

**Quantity of Cases Per Pallet Layer** 39 Cases

**Pallet Height** 1.75 MTR

**Quantity of Layers Per Pallet** 5 Layers

**Pallet Gross Weight** 775 kg

**Quantity of Cases Per Pallet** 195 Cases

PACKAGING

Inner Component Packaging

Type	Materials	Weight	Recycled Plastic %	Recyclable	Returnable	Composite
Can	Plastic	0.18 g	- %			
Can	Steel	110 g	- %			

Outer Case Packaging

Type	Materials	Weight	Recycled Plastic %	Recyclable	Returnable	Composite
Paper/Polyethylene	Plastic	32 g	- %			
Paper/Polyethylene	Paper/Cardboard	15.89 g	- %			

Transport Packaging

Type	Materials	Weight	Recycled Plastic %	Recyclable	Returnable	Composite
Other	Plastic	200 g	- %			
Other	Wood	22500 g	- %			

OTHER INFORMATION

**Manufacturer Comments**

Product is produced in Italy for Staple Dairy Products Ltd.

CONTACT INFORMATION

Address

Staple Food Group  
New Grove House  
Murray Road  
Orpington  
Kent  
BR5 3QY  
United Kingdom

P. (Phone) 0044 (0) 1689 888700

The information on the [Erudus System](#) has been supplied by the manufacturers of the products and, whilst the owners of the Erudus System take steps to ensure the information is regularly updated, they give no warranty and no guarantee that the information is accurate. Product information and ingredients may change, please always read product labels carefully in addition to using the information provided by Erudus.

We do not accept liability for any inaccuracies or incorrect information contained on this site.  
Please visit <http://www.erudus.com/terms-and-conditions> for full terms and conditions.