

This specification is published by [Erudus](#) for Fairway Foodservice

Fairway Assured Strawberry Jam Sponge Puddings 12 x 130g

Strawberry Jam Sponge Pudding

PRODUCT DESCRIPTION

Moist golden Sponge Pudding, topped with a fruity Strawberry Jam Sauce. 12 Individual Puddings.

Brand	Fairway Foodservice
Label Own Label Code	039344
Product Type	Food
Product Category	Desserts
Storage Type	Frozen
Erudus ID	2f546e5e2d344cfbbb6e95bdbec20246
Specification Type	Legacy



Outer Case GTIN 5060154039344



INGREDIENTS

Ingredient Declaration

Strawberry Jam (29.5%) (Glucose-Fructose Syrup, Strawberries, Gelling Agent: Pectin. Acidity Regulators: Citric Acid, Sodium Citrates. Colour: Anthocyanins. Natural Flavouring), Sugar, **WHEAT** Flour (with Calcium Carbonate, Iron, Niacin, Thiamin), Whole **EGG**, Water, Margarine (Palm Oil, Rapeseed Oil, Water, Emulsifier: Mono- And Diglycerides Of Fatty Acids.), Rapeseed Oil, Modified Maize Starch, Raising Agents: Disodium Diphosphate, Sodium Bicarbonate. **WHEAT** Flour, Colours: Carotenes, Anthocyanins. Natural Flavouring

ALLERGENS

Product Contains:

Celery/Celeriac	No	Mustard	No
Cereals Containing Gluten	Yes	Nuts (Tree)	May Contain
Barley	No	Almond nuts	May Contain
Oats	No	Brazil nuts	No
Rye	No	Cashew nuts	No
Wheat (including Spelt and Khorasan)	Yes	Hazelnuts	May Contain
Gluten content <20ppm	No	Macadamia (Queensland) nuts	No
Crustacea	No	Pecan nuts	May Contain
Eggs	Yes	Pistachio nuts	May Contain
Fish	No	Walnuts	May Contain
Lupin	No	Peanuts	No
Milk	No	Sesame Seeds	No
Molluscs	No	Soybeans	No
		Sulphur Dioxide and Sulphites	No

Risk Source:

Additional Allergen Information

For allergens, including cereals containing gluten, see ingredients in bold and upper case. May contain traces of nuts. Suitable for vegetarians.

SUPPLEMENTARY INGREDIENT INFORMATION

Palm Oil	Yes
Hydrogenated Vegetable Oil/Fat	No
GM Protein/DNA	No

ADDITIVES

Product Contains:

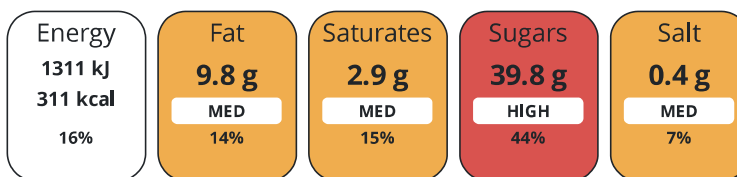
Artificial Antioxidants	No	Artificial Flavourings	No
Artificial Colours	No	Artificial Preservatives	No
Artificial Flavour Enhancers	No	Artificial Sweeteners	No

DIET SUITABILITY

Suitable for Coeliacs	No	Halal Diet	No
Kosher Diet	No	Vegetarian Diet	Suitable for
Vegan Diet	No		

NUTRITIONAL INFORMATION

Each 100g/ml portion contains:



of your reference intake.

Typical values per 100g/ml : Energy 311kcal / 1311kJ

Nutrient	per 100g/ml	RI per 100g/ml
Energy (kJ)	1311 kJ	16%
Energy (kcal)	311 kcal	16%
Fat	9.8 g	14%
of which Saturates	2.9 g	15%
of which Mono-unsaturates	4.77 g	
of which Polyunsaturates	1.9 g	
Carbohydrate	52.5 g	20%
of which Sugars	39.8 g	44%
of which Starch	12.61 g	
Fibre	0.5 g	
Protein	3.3 g	7%
Salt	0.4 g	7%
Sodium	160 mg	

SUPPLEMENTARY NUTRITIONAL INFORMATION

HFSS (HIGH IN FAT, SALT AND SUGAR)

HFSS Status	Yes
--------------------	-----

HANDLING &
STORAGE
INFORMATION

Directions For Use

COOKING INSTRUCTIONS: Re-heat from frozen. Remove film. Place container in microwave. Heat on FULL power. 800W for approximately 1 minute 30 seconds, 1100W - 1 minute, 1800W - 35-40 seconds. Allow to stand for 1 minute. Cover container with pudding dish, turn out to serve, scooping out any remaining sauce. WARNING: HOT STEAM & TOPPING WHEN RE-HEATED.

Storage Instructions

DO NOT REFREEZE ONCE DEFROSTED. STORE AT -18°C OR COLDER.

Shelf Life from Time of Production 547 Days

ACCREDITATIONS/
CERTIFICATIONS/
ASSURANCE
SCHEMES
ORIGIN

BRCGS Certified

Roundtable of Sustainable Palm Oil (RSPO)

Product Country of Origin/Place of United Kingdom

Provenance

Additional Origin Details

Produced in the UK but using ingredients from various origins.

PRODUCT
CHARACTERISTICS

Standards Testing

Microbiological Standards

Organism	Description	Frequency	Target	Maximum	Sample (g or ml)
Total Viable Count (TVC) (cfu/g or ml)		Every Batch	<10000	499999	-
Enterobacteriaceae (cfu/g or ml)		Every Batch	<500	999	-
Staphylococcus Aureus (cfu/g or ml)		Every Batch	<20	20	-
Bacillus Cereus (cfu/g or ml)		Every Batch	<20	99	-
E. Coli (cfu/g or ml)		Every Batch	<20	20	-
Listeria Monocytogenes (cfu/g or ml)		Every Batch	<10	10	-
Salmonella (cfu/g or ml)		Every Batch	=0	0	-

Physical Standards

Test	Description	Frequency	Target	Range	Sample (g or ml)
Weight (g)		Hourly	>130	130 to 173	-

CONFIGURATION

Case Configuration

Inner Pack Configuration

Total Quantity of Inner Components in 12 Units

Outer Case

Is the Outer Case Splittable? No

PRODUCT
WEIGHTS

Inner Component

Variable Weight Consumer Item Yes

Weight/Volume

130g Minimum Net Weight

Outer Case

Outer Case Gross Weight 1.85 kg

Outer Case Net Weight 1.56 kg

PRODUCT DIMENSIONS

Inner Component	
Inner Component Depth	107 mm
Inner Component Width	107 mm
Inner Component Height	59 mm
Outer Case	
Outer Case Depth	312 mm
Outer Case Width	215 mm
Outer Case Height	132 mm

PALLET INFORMATION

Quantity of Cases Per Pallet Layer	15 Cases	Pallet Height	1.6 MTR
Quantity of Layers Per Pallet	11 Layers	Pallet Gross Weight	335.25 kg
Quantity of Cases Per Pallet	165 Cases		

PACKAGING

Inner Component Packaging						
Type	Materials	Weight	Recycled Plastic %	Recyclable	Returnable	Composite
Tub	Plastic	124 g	69.00 %			
Outer Case Packaging						
Type	Materials	Weight	Recycled Plastic %	Recyclable	Returnable	Composite
Case	Plastic	5 g	- %			
Case	Paper/Cardboard	119 g	- %			
Transport Packaging						
Type	Materials	Weight	Recycled Plastic %	Recyclable	Returnable	Composite
Other	Plastic	350 g	0.00 %		Yes	
Other	Wood	28000 g	- %		Yes	

OTHER INFORMATION CONTACT INFORMATION

ADDRESS

Fairway Foodservice
 11 Cartwright Court
 Bradley Business Park
 Huddersfield
 HD2 1GN
 United Kingdom

P: (Phone) 01422 319105

The information on the [Erudus System](#) has been supplied by the manufacturers of the products and, whilst the owners of the Erudus System take steps to ensure the information is regularly updated, they give no warranty and no guarantee that the information is accurate. Product information and ingredients may change, please always read product labels carefully in addition to using the information provided by Erudus.

We do not accept liability for any inaccuracies or incorrect information contained on this site. Please visit <http://www.erudus.com/terms-and-conditions> for full terms and conditions.